



ANTARCTIC CLIMATE & ECOSYSTEMS
COOPERATIVE RESEARCH CENTRE



Australian Government
Department of Industry and Science

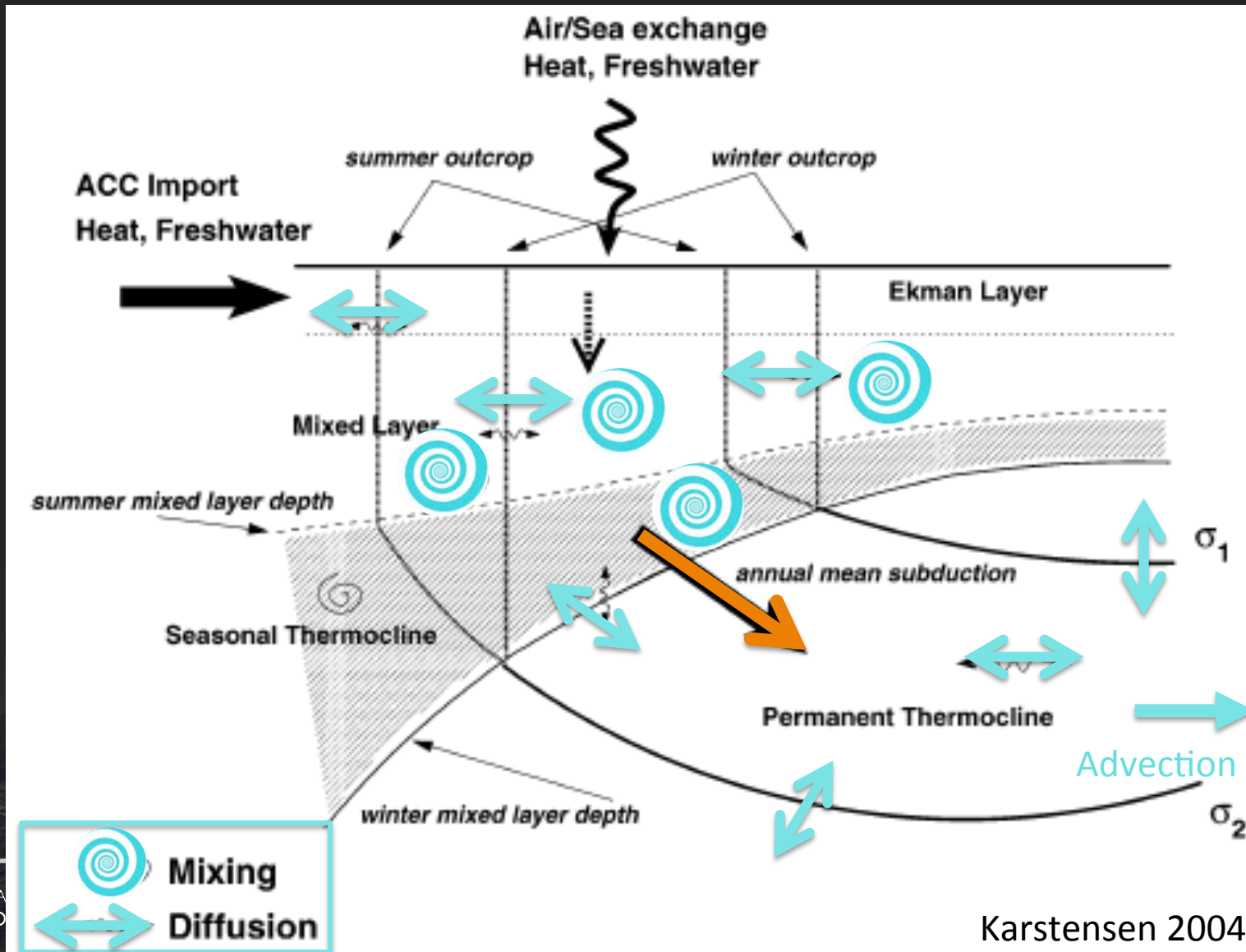
Business
Cooperative Research
Centres Programme

WATER MASS TRANSFORMATION DIAGNOSTICS IN MOM5 (Chapter 36 in MOM5 manual)

Stephanie Downes



Subduction versus Water Mass Transformation

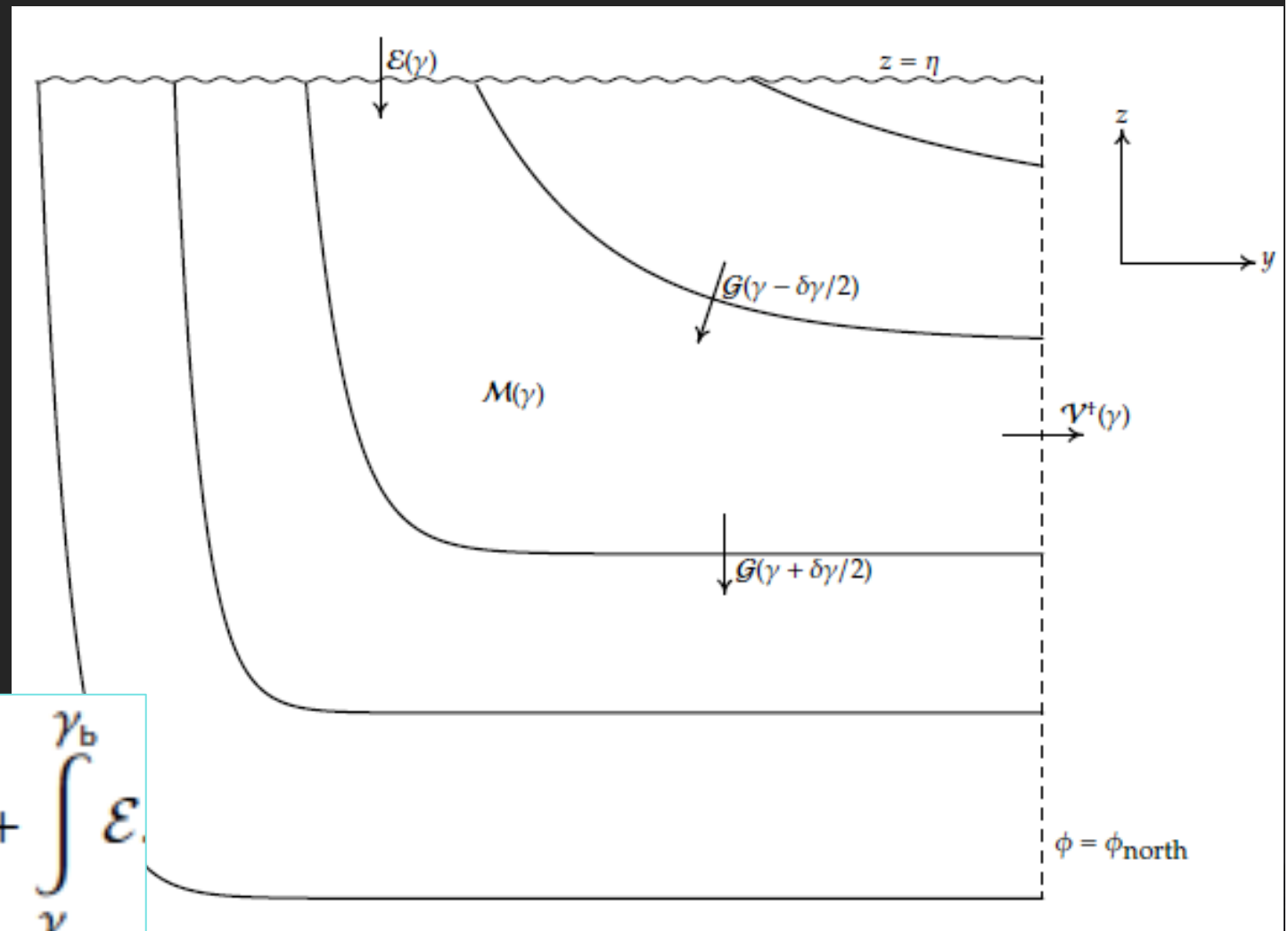


Water mass transformation in MOM5

Balancing mass
in a density layer

$$\int_{\gamma}^{\gamma_b} \left(v^+ + \frac{\partial \mathcal{M}}{\partial t} \right)$$

$$= \mathcal{G}(\gamma) - \mathcal{G}(\gamma_b) + \int_{\gamma}^{\gamma_b} \varepsilon$$



ANTARCTIC CLIMATE & ECOSYSTEMS
COOPERATIVE RESEARCH CENTRE



s.downes@utas.edu.au



@OceanStephD

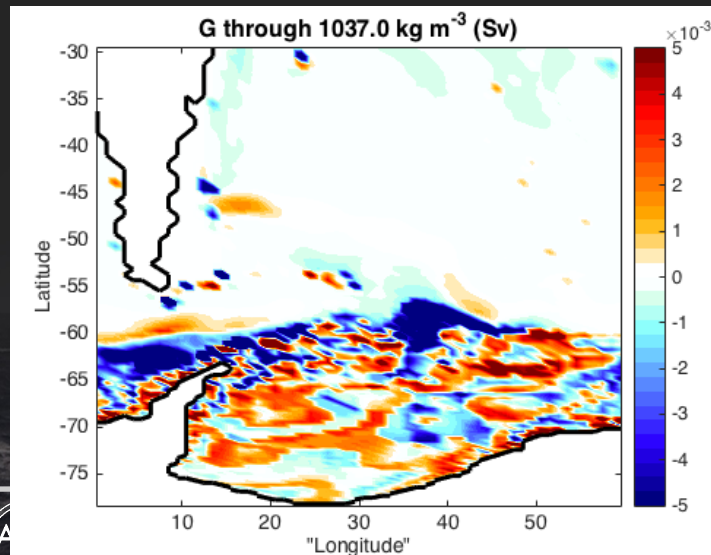
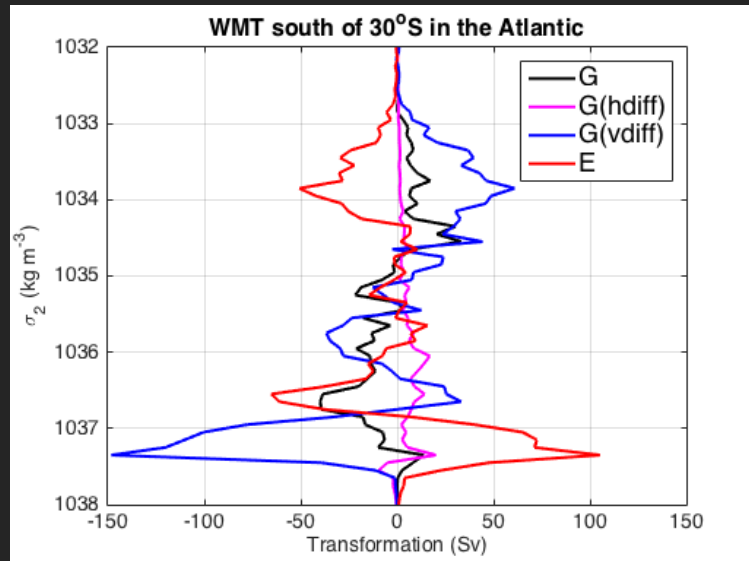
Outputted tendency terms (T and S)

G (diapycnal)	E (surface)	V (transport)
<ul style="list-style-type: none">• Eulerian time tendency (all processes impacting T and S)• Submesoscale transport• Advection• Mesoscale transport• Geothermal heat• Calving• Diffusion (vertical and lateral): from static background diffusivity, internal tide mixing, coastal tidal mixing, leewave mixing, isopycnal & diapycnal mixing, KPP, neutral diffusion (cabelling & thermobaricity)	<ul style="list-style-type: none">• Precipitation• Evaporation• River runoff• Melt & sea ice formation• Shortwave heating	<p>Volume transport terms (TX_TRANS_RHO & TY_TRANS_RHO with mesoscale and submesoscale components)</p>

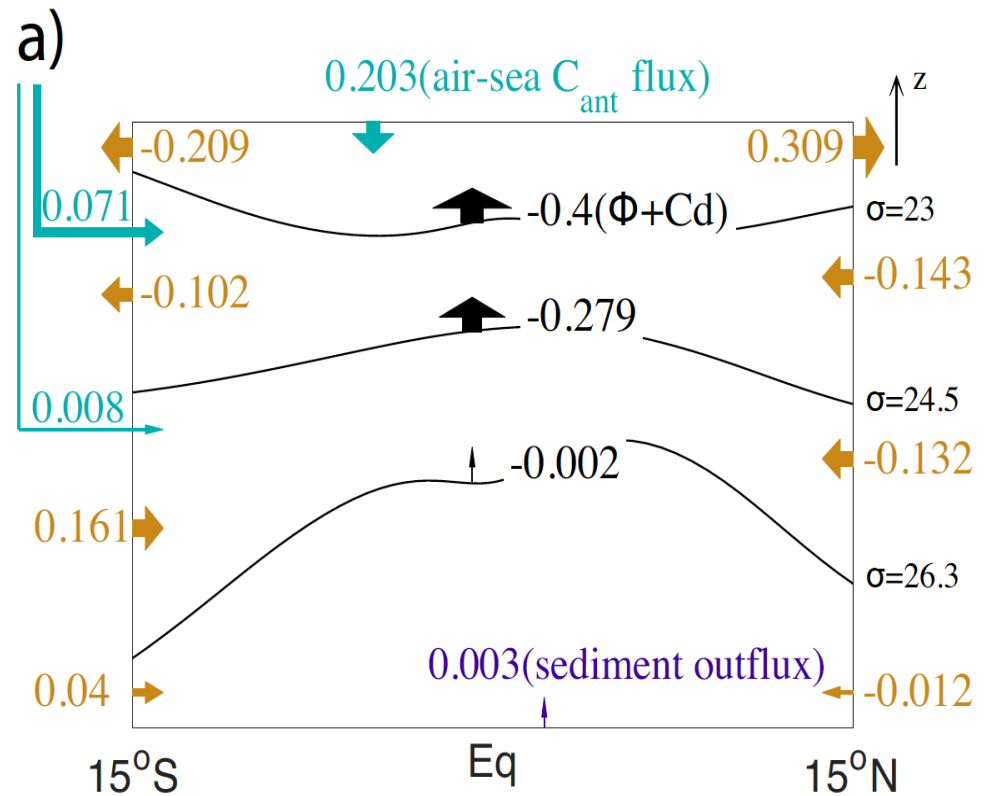


Examples of usage

South Atlantic



Equatorial Pacific



Zhai et al. (2017)

How is it done? (*can be time consuming)

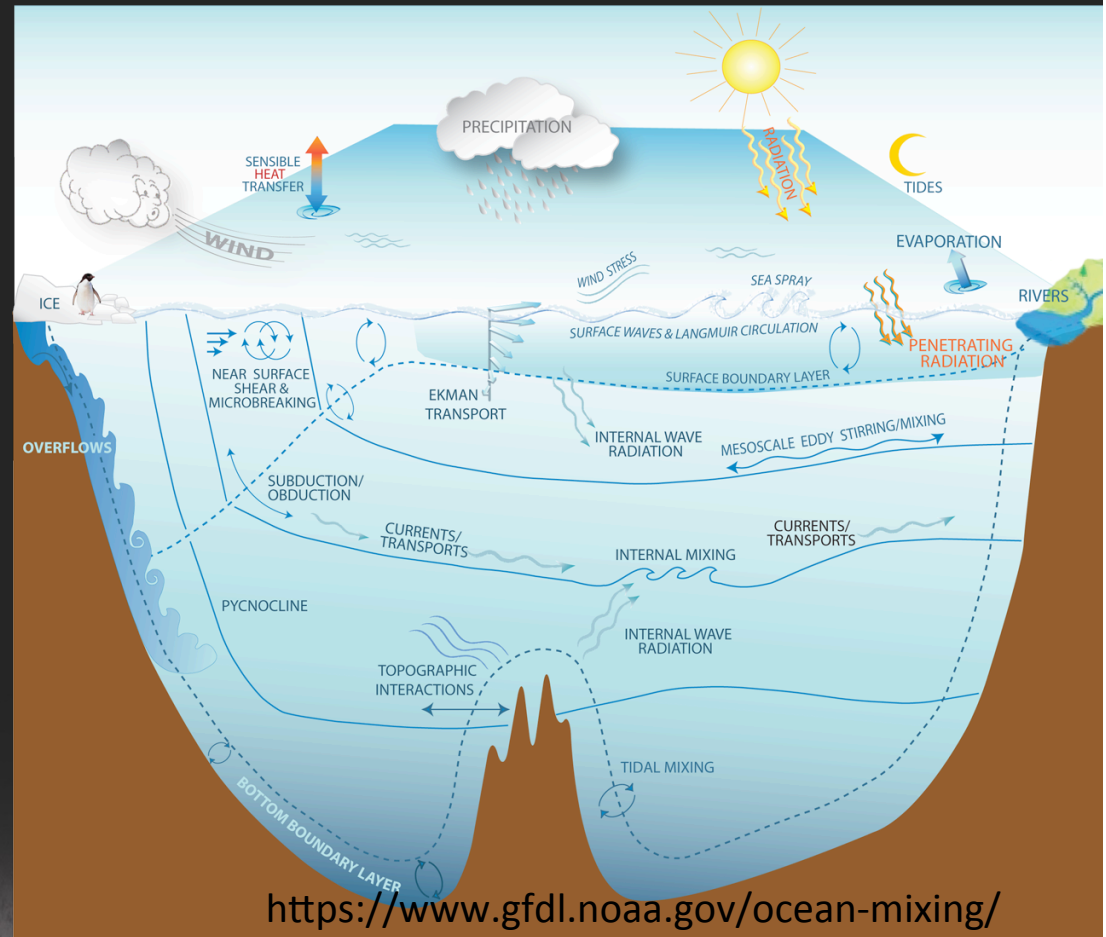
ONLINE

SALT tendency terms:
 $\text{kg m}^{-2} \text{s}^{-1}$

TEMP tendency terms:
 W m^{-2}

OFFLINE

Use the specific heat capacity, local salinity, grid area, surface fluxes to convert to the same units before binning into required density classes.



ANTARCTIC CLIMATE & ECOSYSTEMS
COOPERATIVE RESEARCH CENTRE



s.downes@utas.edu.au



@OceanStephD